



Risk Management
Commodities Trading
Physical Logistics
Regulatory Compliance

Pipeline 8.1

Manages and even automates the scheduling, transportation and actualization for all liquid energy commodities moved by pipeline by minimizing the time and effort for pipeline schedulers.

The comprehensive functionality feature set provides the ability for schedulers the ability to view traded volumes of NGLs, crude oil and refined products as soon as traders enter deals. It also allows them to view scheduling activities by counterparty, location, or by pipeline. Schedulers can match supply volumes to market volumes and create pipeline movements, and contracted volumes can be split and tracked across multiple delivery segments or matched against multiple trades.

New in Pipeline 8.1

Building on the capabilities of Pipeline 8.0, Pipeline 8.1 adds new functionality features for automation of several functions, greatly enhancing user productivity. The new component adds functionality to create and store pre-defined pipeline routes and plans with associated information such as product, carrier, origin and destination locations. Additionally, Pipeline 8.1 provides the ability to automation and management of the creation of shipments based on those pre-defined routes and plans. Lastly, schedulers have the ability to can automate the capture of gathering fees on shipments such as pipeline tariffs, truck unloading fees and viscosity surcharges on wellhead property shipments.

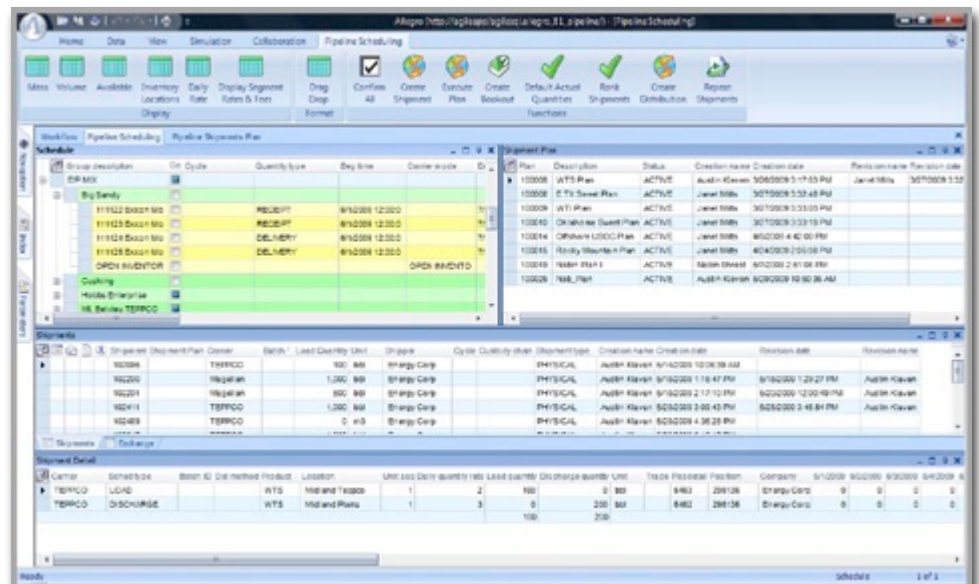
| Key Feature | Key Benefit |
|---|--|
| Manage, schedule, transport and actualize all liquid energy commodities moved by pipeline | Regardless of whether the commodities are Natural Gas Liquids, Crude Oil or Refined Liquid Products, the Pipeline component has the ability to manage the scheduling, transportation logistics and actualization of the transactions and view the traded volumes and logistics data in real time. |
| Match supply volumes to market volumes | Optimization and profitability is enhanced by the ability to match supply to market demand via the pipeline transportation contracts. |
| Define pipeline shipment routes comprised of product, carrier, origin and destination | Allows schedulers to pre-define frequently used pipeline shipment routes consisting of multiple pipeline segments along with product to be carried, carrier servicing the route, and the origin and destination locations. This greatly minimizes the time and effort for pipeline schedulers. |
| Create and store shipment plans | Using pre-defined pipeline route profiles, clients can create and store pre-defined pipeline shipment plans for frequently used shipment profiles to greatly enhance user productivity. |
| Automate creation of shipments | Allows a client to automatically apply pre-defined shipment plans to pre-defined pipeline routes. For frequently used pipeline shipment profiles, this automation greatly enhances productivity. |
| Automate the capture of gathering fees on shipments | Along with the ability to create and automatically schedule pipeline shipments, Pipeline 8.1 provides the ability to automatically capture all of the related fees on the plan such as pipeline tariff gathering fees, truck unloading fees, and viscosity surcharges on wellhead property shipments. This not only reduces time and effort, but also provides for much more accurate capture of these fees. |

Business Case

Pipeline schedulers deal with a highly complex set of data when interacting with the daily operations of trading and scheduling logistics on pipelines. Multiple segments, carriers, commodity liquids and an extensive amount of fees, tariffs, surcharges, etc combine to make the planning and scheduling of pipeline shipments a very complex and time consuming process.

Using Pipeline 8.1 schedulers can match supply to market demand by using the powerful Pipeline tools to create optimized and pre-defined pipeline routes made up of the various complex data of segments, carriers and commodity products. Once those routes are created, the scheduler can generate and store pre-defined shipment plans for frequently used shipment profiles. Additionally, when using the shipment creation tools, the solution will automatically capture all fees, tariffs and surcharges for every aspect of the transaction, greatly reducing the effort needed to compile a plan and reducing manual errors. For frequently used, recurring shipment profiles, the scheduler can also create automatic shipments, greatly reducing the time needed to manually interact with the scheduling process. Lastly, when Pipeline 8.1 component is used in conjunction with other Allegro components such as Contracts, Trade Execution, Positions, Settlement, etc, not only can clients capture physical transactions, and manage pipeline shipments, but also track best available physical positions and accurately settle those transactions as well.

Component View



Powerful tools for creating pipeline shipment plans and schedules

For more information go to
www.allegrodev.com
 or call us at +1.888.239.6850

North America +1.214.237.8000
 Europe +44(0)20.7382.4310
 Asia Pacific +65.6236.5730

Allegro[®]

Allegro is a global leader in commodity trading and risk management solutions for power and gas utilities, refiners, producers, commodity traders, and commodity consumers. With more than 26 years of deep industry expertise, our enterprise platform drives profitability and efficiency across front, middle, and back offices, while managing the complex logistics associated with physical commodities. Allegro provides customers with agile solutions to manage risk across gas, power, coal, crude, petroleum, agricultural, emissions, and other commodity markets, allowing decision makers to hedge and execute with confidence. Allegro has recently been recognized as the Energy Risk Software House of the Year and received The Energy Business Awards Gold Award for Excellence. Headquartered in Dallas, Texas, Allegro has offices in Calgary, Houston, London, Singapore and Zurich, along with a global network of partners.